

# Plant Automation

A one stop shop for all of your Concrete Plant  
Automation Electrical and Pneumatic requirements

**B P L**  
[www.basfordplant.com](http://www.basfordplant.com)



## Contact us



01623 451 010



[sales@basfordplant.com](mailto:sales@basfordplant.com)



[www.basfordplant.com](http://www.basfordplant.com)



Mayfield House, Pinxton Lane, Kirkby in Ashfield, Notts, NG17 8LT

**B P L**  
[www.basfordplant.com](http://www.basfordplant.com)

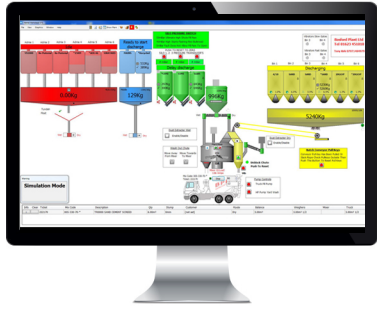


BPL Automation division was established in 1992 and specialise in all aspects of Concrete Plant Automation from bespoke software development to Pneumatic Installations.

We offer a one stop shop for all of your Concrete Plant Automation Electrical and Pneumatic requirements.

Below are some of the services that we can offer.

## Fully Automated Plant Control



We are now on our 3rd generation of Concrete Batching System. Working closely with the plant management and operator we have developed our current generation to provide a user friendly and intuitive package.

We pride ourselves on offering a fully integrated Concrete Plant control package, with all aspects of the plant being covered, thus reducing the number of stand-alone systems that end up being mounted on the control room walls. The system is based on "off the shelf components" thus providing a cost effective solution. The plant interface works via an intuitive single or multi-screen environment with the operator using just a keyboard and a mouse.

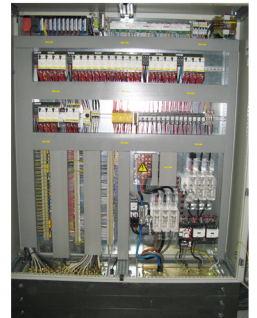
### FEATURES

- ✓ Fast, accurate batching
- ✓ Detailed reports
- ✓ Multi-level security
- ✓ Remote support

## Motor Control Centre (MCC) Design , Build and Installation

To continue our complete service to the Concrete industry we offer a design, build and installation of MCC's these are the electrical centre of all plants, and house the motor control gear and the main plant controller (PLC).

The MCC's are all custom designed and built to a high standard. Our MCC's comply fully with all relevant legislation.



## Plant Electrical and Pneumatic Installations

We have a fully experienced team of Electricians that can service your requirements from a complete plant installation to an additional admix pump.

Our electricians only work on Concrete plant so have years of relevant experience.



Call us today on **01623 451 010** and speak to an expert about your requirements.

Alternatively, visit our website at [www.basfordplant.com](http://www.basfordplant.com)